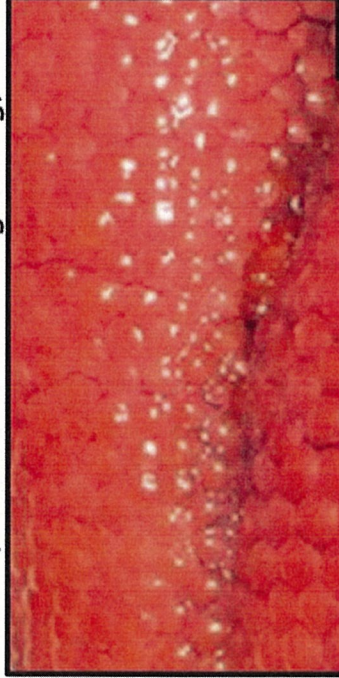


Luu-k'e xvm-ni 'vt

(Salmon when it is growing)

Once the spring salmon arrive at their home stream they lay their eggs.



Gvmp yan-li~'

(Salmon eggs they are)

Hat-dvn cha' tes-ya

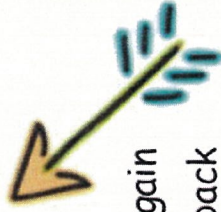
(Then it goes again)



Dan-dee-ni naa-ghit-li~'

(Spring Salmon we are)

Once it's spring again the salmon swim back upriver to their home stream.



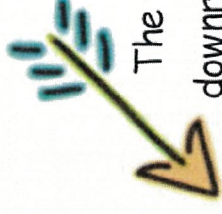
The salmon eggs begin in the home stream. Then the salmon hatch.



Lhuk mvsh-xee-ye' yan-li~'

(Salmon fingerlings they are)

The fingerlings swim downriver to the ocean. They turn into adult salmon in the ocean.



Luu-k'e yan-li~'

(Salmon they are)